

OptimalDuctTM

by Castel Engineering

From the outdoor unit to the wall,
OptimalDuctTM covers it fast and all!



OptimalDuct™



Outstanding UV resistance



Paintable*



Energy saver



Flush-fit for better in-corner positioning



Cost Saver



Two-year warranty
Conditions may apply



SpinFix™: The time-saving clip!



Easy Click system



Available in pure white colour



OptimalDuct™ Flexy Kit



Even when taped, the insulation may get damaged due to climatic conditions or other factors.

Protect your installation with the Flexy Kit!

* Please respect the recommendations of paint manufacturers for painting PVC, ASA, PE and PP plastics. We recommend painting in bright colours only.

OptimalDuct™

Benefits	pg 4
Installation instructions	pg 7

Kits

XL Installation Kit	pg 9
Retro Fit Kit	pg 10
Flexy Kit	pg 11

Parts

OptimalDuct™	pg 12
SpinFix™	pg 12
Connection Piece	pg 13
End Cap	pg 13
Wall cover	pg 13
90° Flat Elbow	pg 14
90° Elbow Bend Outside	pg 14
90° Elbow Bend Inside	pg 14
Duct Reducer	pg 15
Flat Wall Rosette	pg 15
T-Joint	pg 15
Duct End	pg 16

Ordering info	pg 18
----------------------------	-------



OptimalDuct™ protects the linesets

In most installation configurations, the linesets connected to the outdoor unit and drain hose run along the exterior wall before passing through the wall to connect to the indoor unit.

The lineset insulation is particularly vulnerable to degradation due to climatic conditions and UV radiation.

Without proper protection the insulation may crack and crumble, losing its insulating properties.



Cost Saver

Air conditioner and heat pump equipment do not operate properly when the lineset or the insulation gets damaged.

This can lead to higher maintenance cost or entire unit replacement before its normal end of life.

OptimalDuct™ protects and contributes helps to extend the life of the equipment.



Energy Saver

Exposed linesets with damaged insulation may cause the system to use higher levels of energy and cost more to operate.

OptimalDuct™ protects the lineset insulation an saves energy.



This would never have happened with OptimalDuct™



5 steps for a 1-man job

OptimalDuct™ is designed to **ease the job of the installer.** Its patent-pending rail and SpinFix™-clip-original design allow a fast, professional installation in just 5 steps:

1. Fix the bottom parts of the fitting and the duct to the wall
2. Place a cable tie in the SpinFix™. Insert and rotate the SpinFix™ onto the rail at the bottom of the OptimalDuct™.
3. Lay the lineset, drain hose, and control cable inside the duct.
Strap the cable tie and cut off any excess material.
Avoid crushing the drainhose and lineset insulation.
4. Cover with the top part of the OptimalDuct™. Remove the protection film.
5. Install the fittings. No screws needed = clicking system.



Benefits



OptimalDuct™ matches your style

STANDARD COLOURS

OptimalDuct™ is available in Pure white



PAINTABLE

OptimalDuct™ can be painted to blend with any exterior/interior colour palette.

In order to ensure good paint adhesion, we recommend following paint manufacturers' instructions for painting plastics (PVC, ASA, PE, PP).



Invest in a professional installation, designed for both unitary and split units

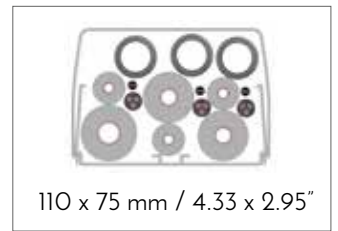
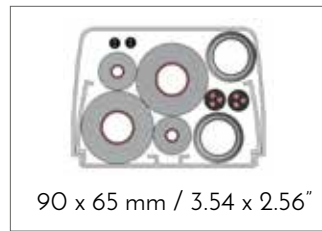
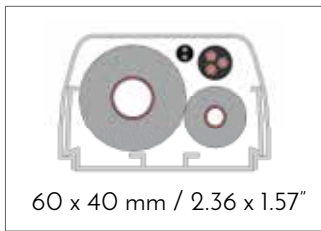
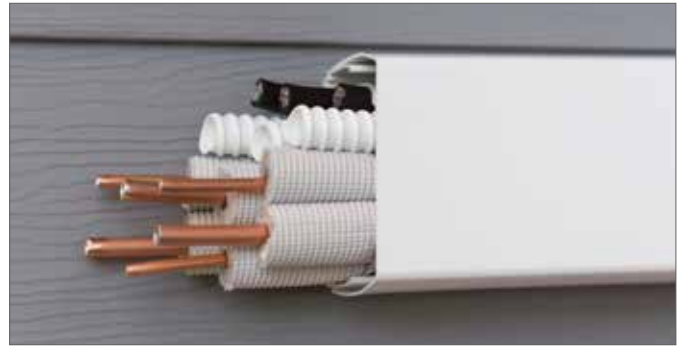
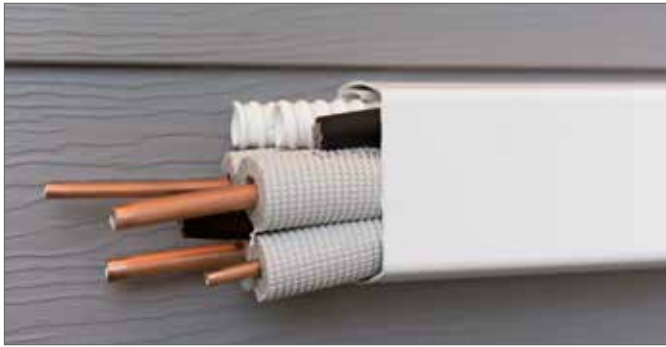
The OptimalDuct™ lineset-cover system includes a variety of fittings to meet any challenge. The wide range of fittings offers the professional installer a solution for the most difficult installation configurations for either unitary, heat pump and ductless mini-split equipments.

OptimalDuct™ also offers a flush-fitting design. The bottom half is flat and enables improved in-corner fit eliminating unsightly gaps that create an unsightly appearance.





OptimalDuct™ comes in 4 different sizes



Depending on installation configurations, ducts' contents may vary.

Exterior lineset installation without OptimalDuct™



Exterior lineset installation with OptimalDuct™

Creates a professional appearance that protects and helps to maintain equipment efficiency



Installation instructions



SpinFix™ helps 1 person quickly a secure linesets and drain hose in OptimalDuct™ in 5 easy steps!



Step 1

Fix the bottom parts of the fitting and the duct to the wall. (Screws are not included.)



Step 2

Place a cable tie in the SpinFix™ and insert and rotate the SpinFix™ onto the rail at the bottom of the OptimalDuct™.



Step 3

Lay the lineset, drain hose and control cable inside the duct, strap the cable tie around them without damaging neither deforming them. Cut off any excess of cable tie. Duct content may vary according to installation configurations.



Step 4

Cover with the top part of the OptimalDuct™ and remove the protection film.



Step 5

Install the fitting top (cover). No screws needed = clicking system.



Optional step

Paint OptimalDuct™ to match the wall colour*.

* Please respect the recommendations of paint manufacturers for painting PVC, ASA, PE and PP plastics. We recommend painting in bright colours only.

Discover a wide range of accessories in our **Castel Plus™** catalogue.



Easybend



Brackets



Drain pipe



Mounting blocs



XL Installation Kit



FAST INSTALLATION



PAINTABLE*



COLOUR



UV RESISTANT



CLICK

All you need to cover in 1 single box !

- 3x Straight duct: length 1,22 m / 48.03"
- 1x Flexible dose: length 1 m / 39.37"
- 2x Connection dieces
- 1x 90° Flat elbow
- 1 Bag (10 pcs) x SpinFix™ and cable ties
- 1x Wall cover
- 1x Flex connector
- 1x "Through-end"
- 1x Stainless steel clamp

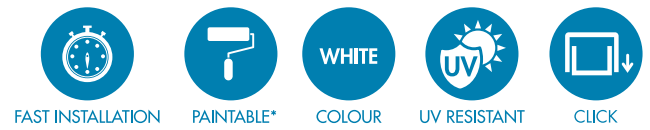


Size	Colour	Item No.	Model No.	Quantity
80mm/3.15"	Pure white	0505.00116.072	OD.XL.80	1 kit/box
110mm/4.33"	Pure white	0505.00316.072	OD.XL.110	1 kit/box



* Please respect the recommendations of paint manufacturers for painting PVC, ASA, PE and PP plastics. We recommend painting in bright colours only.

Retro Fit Kit



The ideal retrofit solution to cover an existing installation with the right lineset covers!

- 3x Straight duct: length 1,22 m / 48.03"
- 1x Wall cover
- 2x Connection pieces
- 1x 90° Flat elbow
- 1x Duct end
- 1 Bag (10 pcs) x SpinFix™ and cable ties



Size	Colour	Item No.	Model No.	Quantity
80mm/3,15"	Pure white	0505.00115.072	OD.RETRO.80	1 kit/box
110mm/4,33"	Pure white	0505.00315.072	OD.RETRO.110	1 kit/box



* Please respect the recommendations of paint manufacturers for painting PVC, ASA, PE and PP plastics. We recommend painting in bright colours only.

Flexy Kit



FAST INSTALLATION



PAINTABLE*



COLOUR



UV RESISTANT

Protects your lineset from the condenser unit to the wall.
Saving time when connecting 2 ducts is an art !

- 2x Flexible hose: length 1 m / 39.37"
- 2x2 Flexible hose connectors
- 2x2 Stainless Steel clamps
- 2 x Flexible "Through-end "

Size	Colour	Item No.	Model No.	Quantity
80mm/3,15"	Pure white	0505.00114.072	OD.FLEX.80	2 sets/box
110mm/4,33"	Pure white	0505.00314.072	OD.FLEX.110	2 sets/box



* Please respect the recommendations of paint manufacturers for painting PVC, ASA, PE and PP plastics. We recommend painting in bright colours only.

 **Castel Plus™**

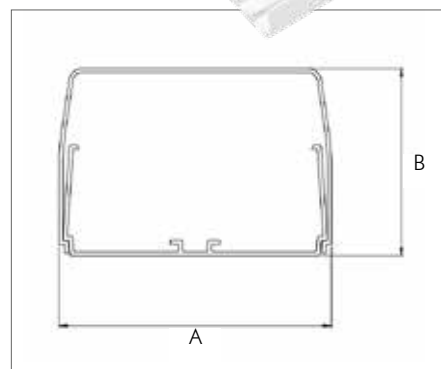
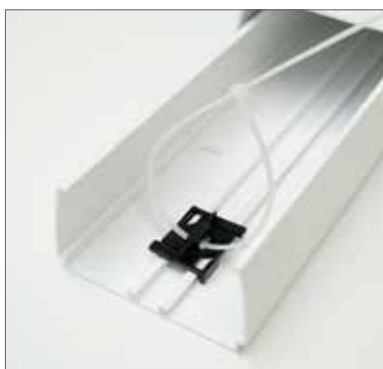
Discover our wide range of accessories
for the installation of split units



OptimalDuct™



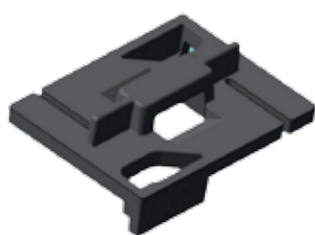
With protection film.
 Made of rigid PVC.
 High quality (usable from -20°C/-4°F to +60°C/140°F in a static position).



Model No.	A	B	Length	Colour	Packaging
ODF-60	60 mm/2.36"	40mm	2 m/6.5 feet	Pure white	12 pcs
ODF-80	80 mm/3.15"	60mm	2 m/6.5 feet	Pure white	8 pcs
ODF-90	90 mm/3.54"	65mm	2 m/6.5 feet	Pure white	8 pcs
ODF-110	110mm/4.33"	75mm	2 m/6.5 feet	Pure white	4 pcs

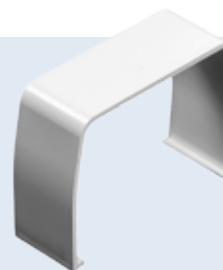
* Please respect the recommendations of paint manufacturers for painting PVC, ASA, PE and PP plastics. We recommend to paint only in bright colours.

SpinFix™



SFIX	SpinFix™	SpinFix™ + Cable Ties
Packaging	1000 pcs	100 sets

Connection Piece



ODCP	60mm/2,36"	80mm/3,15"	90mm/3,54"	110mm/4,33"
Colour	Pure white	Pure white	Pure white	Pure white
Packaging	10 pcs	10 pcs	10 pcs	10 pcs

End Cap



PAINTABLE*



WHITE
COLOUR



UV RESISTANT



ODEC	60 mm/2.36"	80 mm/3.15"	90 mm/3.54"	110 mm/4.33"
Colour	Pure white	Pure white	Pure white	Pure white
Packaging	10 pcs	10 pcs	10 pcs	10 pcs

Wall Cover



PAINTABLE*

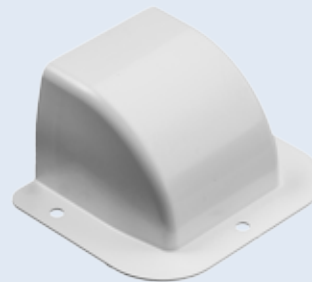


WHITE
COLOUR



UV RESISTANT

For wall inlet or outlet



ODWC	60 mm/2.36"	80 mm/3.15"	90 mm/3.54"	110 mm/4.33"
Colour	Pure white	Pure white	Pure white	Pure white
Packaging	10 pcs	10 pcs	10 pcs	10 pcs

90° Flat Elbow



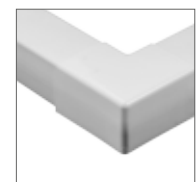
PAINTABLE*



WHITE
COLOUR



UV RESISTANT



OD.FE	60 mm/2.36"	80 mm/3.15"	90 mm/3.54"	110 mm/4.33"
Colour	Pure white	Pure white	Pure white	Pure white
Packaging	10 pcs	10 pcs	10 pcs	10 pcs

* Please respect the recommendations of paint manufacturers for painting PVC, ASA, PE and PP plastics. We recommend painting in bright colours only.

90° Elbow Bend Inside



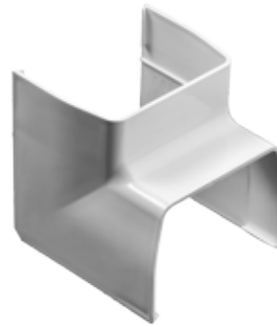
PAINTABLE*



COLOUR



UV RESISTANT



OD.IC	60 mm/2.36"	80 mm/3.15"	90 mm/3.54"	110 mm/4.33"
Colour	Pure white	Pure white	Pure white	Pure white
Packaging	10 pcs	10 pcs	10 pcs	10 pcs

90° Elbow Bend Outside



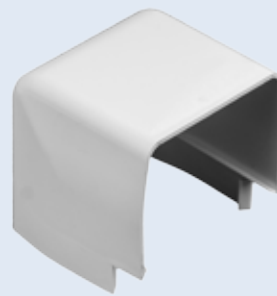
PAINTABLE*



COLOUR



UV RESISTANT



ODOC	60 mm/2.36"	80 mm/3.15"	90 mm/3.54"	110 mm/4.33"
Colour	Pure white	Pure white	Pure white	Pure white
Packaging	10 pcs	10 pcs	10 pcs	10 pcs

Duct Reducer



PAINTABLE*



COLOUR



UV RESISTANT



OD.RJ	80-60 mm/3.15-2.36"	110-80 mm/4.33-3.15"	110-90 mm/4.33-3.54"
Colour	Pure white	Pure white	Pure white
Packaging	10 pcs	10 pcs	10 pcs

* Please respect the recommendations of paint manufacturers for painting PVC, ASA, PE and PP plastics. We recommend painting in bright colours only.

Flat Wall Rosette



PAINTABLE*



COLOUR



UV RESISTANT



Wall Rosette	60 mm/2.36"	80 mm/3.15"	90 mm/3.54"	110 mm/4.33"
Colour	Pure white	Pure white	Pure white	Pure white
Packaging	10 pcs	10 pcs	10 pcs	10 pcs

T-Joint



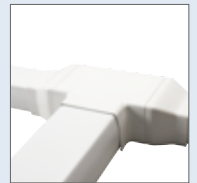
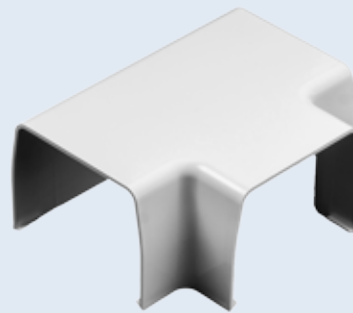
PAINTABLE*



COLOUR



UV RESISTANT



OD.TJ	80 mm/3.15"	110 mm/4.33"
Colour	Pure white	Pure white
Packaging	10 pcs	10 pcs

Duct End



PAINTABLE



COLOUR



UV RESISTANT

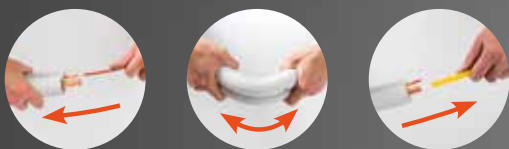


OD.DE	80 mm/3.15"
Colour	Pure white
Packaging	10 pcs

* Please respect the recommendations of paint manufacturers for painting PVC, ASA, PE and PP plastics. We recommend painting in bright colours only.

Another Castel Plus product

AIRCO LINE SET BENDER



**ONLY FOR
SOFT COPPER!**



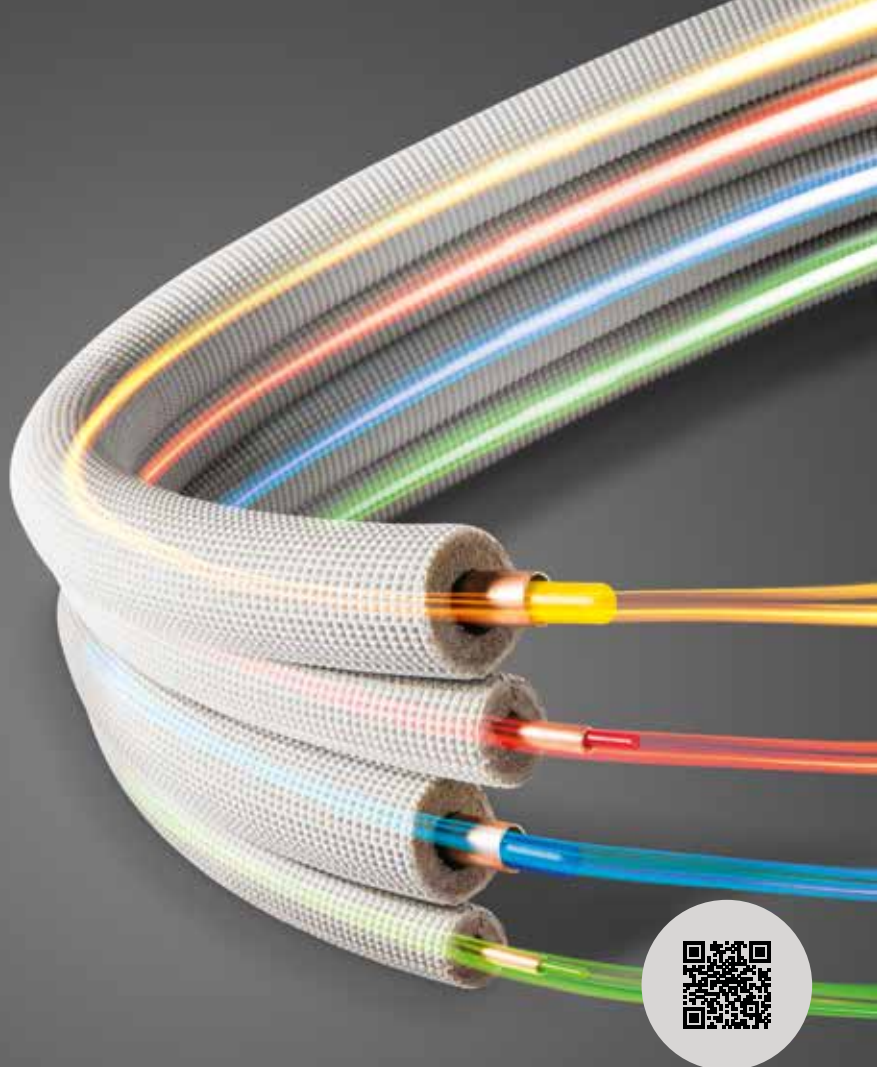
**EASY
TO USE!**



**REUSABLE
IF CLEAN!**



12 mm 9 mm 6 mm 4 mm



www.castel-engineering.com



SCORPION[®] CLIMATE

Hygiene = cleaning & disinfecting
Clean = energy efficient

Scorpion Climate LTD
www.scorpionclimate.com
T +44 (0)1825 872726

PRODUCT	INFO	SIZE	Colour	MODEL NO.	ITEM NO.	PACKAGING	
XL INSTALLATION KIT		All you need to cover in 1 single box! (new installation)	80 mm 3.15"	pure white	OD.XL.80	0505.00116.072	1 kit 21 kit/pallet
			110 mm 4.33"	pure white	OD.XL.110	0505.00316.072	
RETRO FIT KIT		To cover the linesets of an existing installation	80 mm 3.15"	pure white	OD.RETRO.80	0505.00115.072	1 kit 32/pallet
			110 mm 4.33"	pure white	OD.RETRO.110	0505.00315.072	21/pallet
FLEXY KIT		To connect 2 ducts on adjacent walls or to cover linesets from the condenser to the duct.	80 mm 3.15"	pure white	OD.FLEX.80	0505.00114.072	2 sets/box or box 32/pallet
			110 mm 4.33"	pure white	OD.FLEX.110	0505.00314.072	
OPTIMALDUCT™		Duct/trunking Length: 2m With inside fixation rail & SpinFix™	60 x 40 mm 2.36 x 1.57"	pure white	ODF-60	0505.00001.017	12 pcs/24m or 864m/pallet
			80 x 60 mm 3.14 x 2.36"	pure white	ODF-80	0505.00101.018	8 pcs/16m or 384m/pallet
			90 x 65 mm 3.54 x 2.56"	pure white	ODF-90	0505.00201.018	8 pcs/16m or 288m/pallet
			110 x 75 mm 4.33 x 2.95"	pure white	ODF-110	0505.00301.019	4 pcs/8m or 256m/pallet
SPINFIX™		SpinFix™ and Cable Ties			SFIXCT100	0508.00008.023	100 sets
		SpinFix™			SFIX1000	0508.00008.000	1000 pcs
WALL COVER		Combine with a wall sleeve (WSLV). See Castel Plus catalogue	60 mm 2.36"	pure white	ODWC-60	0505.00008.015	10 pcs
			80 mm 3.15"	pure white	ODWC-80	0505.00110.015	
			90 mm 3.54"	pure white	ODWC-90	0505.00210.015	
			110 mm 4.33"	pure white	ODWC-110	0505.00310.015	
CONNECTION PIECE			60 mm 2.36"	pure white	ODC-60	0505.00003.015	10 pcs
			80 mm 3.15"	pure white	ODC-80	0505.00103.015	
			90 mm 3.54"	pure white	ODC-90	0505.00203.015	
			110 mm 4.33"	pure white	ODC-110	0505.00303.015	
FLAT WALL ROSETTE		Aesthetic finishing for through ceiling holes, against the wall.	60 mm 2.36"	pure white	ODWR-60	0505.00009.015	10 pcs
			80 mm 3.15"	pure white	ODWR-80	0505.00111.015	
			90 mm 3.54"	pure white	ODWR-90	0505.00211.015	
			110 mm 4.33"	pure white	ODWR-110	0505.00311.015	

Ordering info

PRODUCT	INFO	SIZE	Colour	MODEL NO.	ITEM NO.	PACKAGING
90° FLAT ELBOW		60 mm 2,36"	pure white	ODFE-60	0505.00006.015	10 pcs
		80 mm 3,15"	pure white	ODFE-80	0505.00106.015	
		90 mm 3,54"	pure white	ODFE-90	0505.00206.015	
		110mm 4,33"	pure white	ODFE-110	0505.00306.015	
90° ELBOW BEND INSIDE		60 mm 2,36"	pure white	ODIC-60	0505.00007.015	10 pcs
		80 mm 3,15"	pure white	ODIC-80	0505.00107.015	
		90 mm 3,54"	pure white	ODIC-90	0505.00207.015	
		110mm 4,33"	pure white	ODIC-110	0505.00307.015	
90° ELBOW BEND OUTSIDE		60 mm 2,36"	pure white	ODCO-60	0505.00004.015	10 pcs
		80 mm 3,15"	pure white	ODCO-80	0505.00104.015	
		90 mm 3,54"	pure white	ODCO-90	0505.00204.015	
		110mm 4,33"	pure white	ODCO-110	0505.00304.015	
T-JOINT		80 mm 3,15"	pure white	ODTJ-80	0505.00109.015	10 pcs
		110mm 4,33"	pure white	ODTJ-110	0505.00309.015	
DUCT REDUCER		80-60mm 3,15-2,36"	pure white	ODRJ80-60	0505.00108.015	10 pcs
		110-80mm 4,33-3,15"	pure white	ODRJ110-80	0505.00112.015	
		110-90mm 4,33-3,54"	pure white	ODRJ110-90	0505.00212.015	
END CAP		60 mm 2,36"	pure white	ODEC-60	0505.00005.015	10 pcs
		80 mm 3,15"	pure white	ODEC-80	0505.00105.015	
		90 mm 3,54"	pure white	ODEC-90	0505.00205.015	
		110mm 4,33"	pure white	ODEC-110	0505.00305.015	
DUCT END		80 mm 3,15"	pure white	ODDE-80	0505.00113.015	10 pcs
		110mm 4,33"	pure white	ODDE-110	0505.00313.015	



Engineering solutions, manufacturing quality

Castel Engineering Belgium - Head Quarters

Rue de la Royenne 84 -7700 Mouscron - Belgium
T +32 (0)56 33 68 40 - F +32 (0)56 33 78 10
info@castel-engineering.com

Castel Engineering UK

Units 4&5, The Townsend Centre
Blackburn Road - Haughton Regis - Beds
LU5 5BQ - UK
T +44 (0) 1582 66 33 88
F +44 (0) 1582 47 20 50
sales@castelengineering.co.uk

Castel Engineering Polska Sp. z o.o.

Tomaszowice Kol. 123
21-002 Tomaszowice - Polska
T +48 (0)81 503 28 22
F +48 (0)81 503 15 55
biuro@castel-engineering.com

**Castel Engineering
SDN. BHD. Malaysia**

info@castel-engineering.com

www.castel-engineering.com